



## Nisai Group

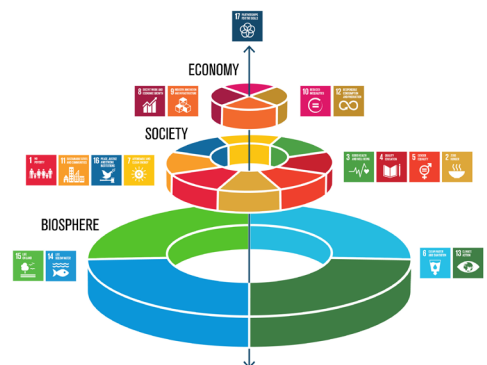
### The context

---

For 25 years, Nisai Group has been supporting school age children and adults to follow their chosen pathway to higher education or the workplace.

With an emphasis on education and the need to fill the local skills gap, Nisai, through a blended approach to learning support Sustainable Development Goals 3) Good Health & Wellbeing, 4) Quality Education, 5) Gender Equality and 10) Reduced Inequalities.

At Nisai, we place our students **at the heart** of everything we do.



# Covid-19: Reconnecting education to lifelong learning

Nisai Group responded to the challenges brought by Covid-19, integrating a lifelong learning approach into our teaching. We support lifelong learning with our online model and inclusive approach. At Nisai, we have helped people to develop their knowledge, acquire new skills and achieve life-changing qualifications wherever they live.

A key focus of our work is ensuring that we can make an impact to our learners' lives by providing them with the skills to pursue academic or vocational pathways.



## Partner with Nisai

We offer a comprehensive academic programme based on the Cambridge International Curriculum, providing internationally recognised standards for education for pupils aged 11 to 18 and Sustainable Development Goals (SDG) courses to ensure a well rounded education.

Our work with NOCN aims at providing English and Maths qualifications overseas, equipping students with the practical skills to get the most out of education. Our learners also benefit from the local language support they receive from Nisai and NOCN.



## Blended and online learning with Nisai

- It ensures consistency of delivery from a central location to multiple sites
- It is used as a way of extending the reach of education making it more accessible
- Provides support for community mentors and coaches
- Removes the barriers enforced by geography
- It places learners from all backgrounds on a level playing field
- It provides long term prospects and opportunity
- A local lead from the community - trained and up-skilled by Nisai
- Communities allowed to take ownership of projects and understand the long term goals of a project
- Nominated stakeholders within the community to be involved in project setup

